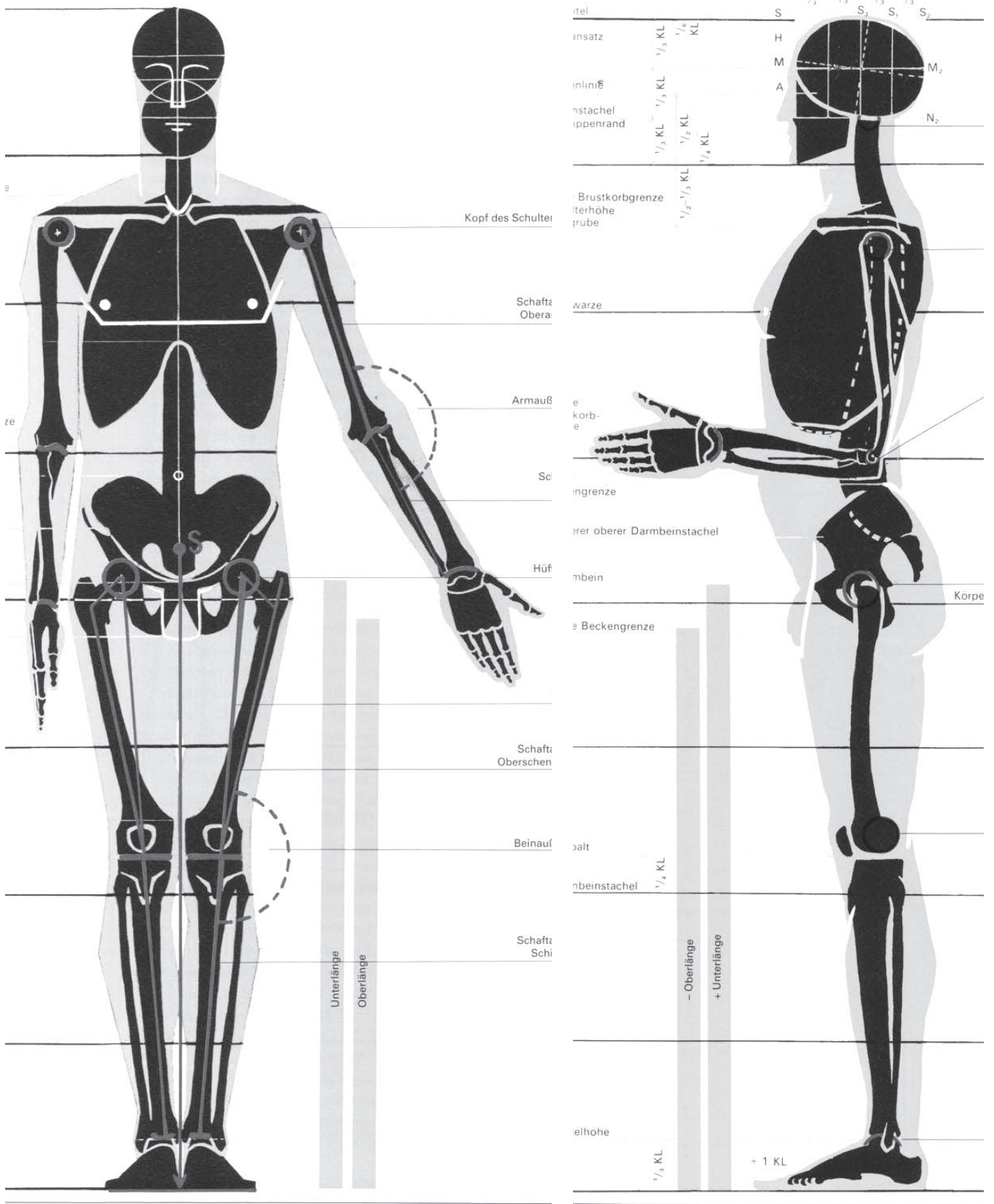
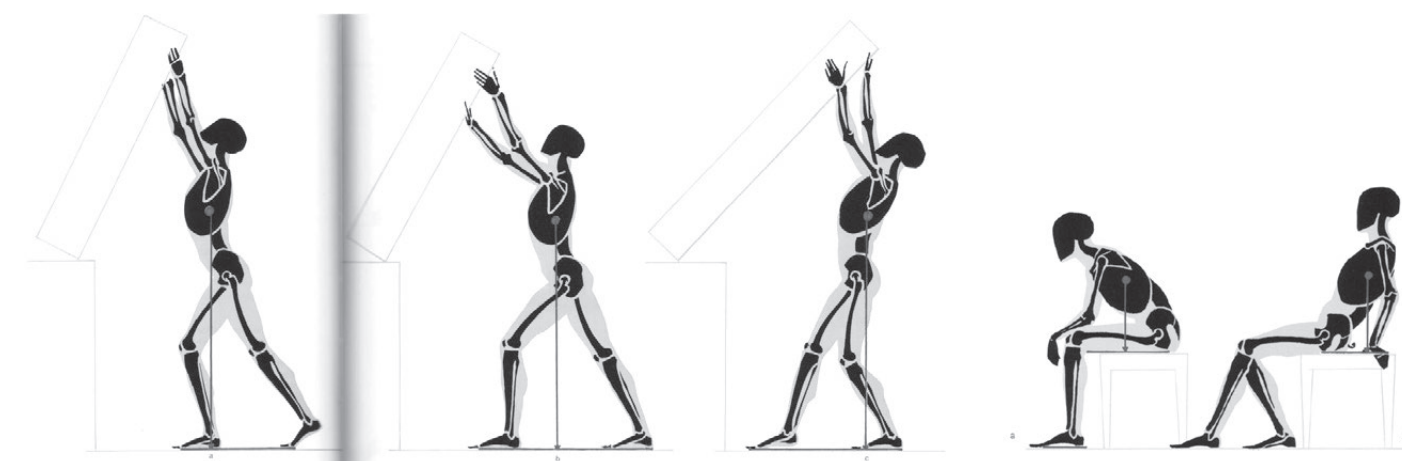
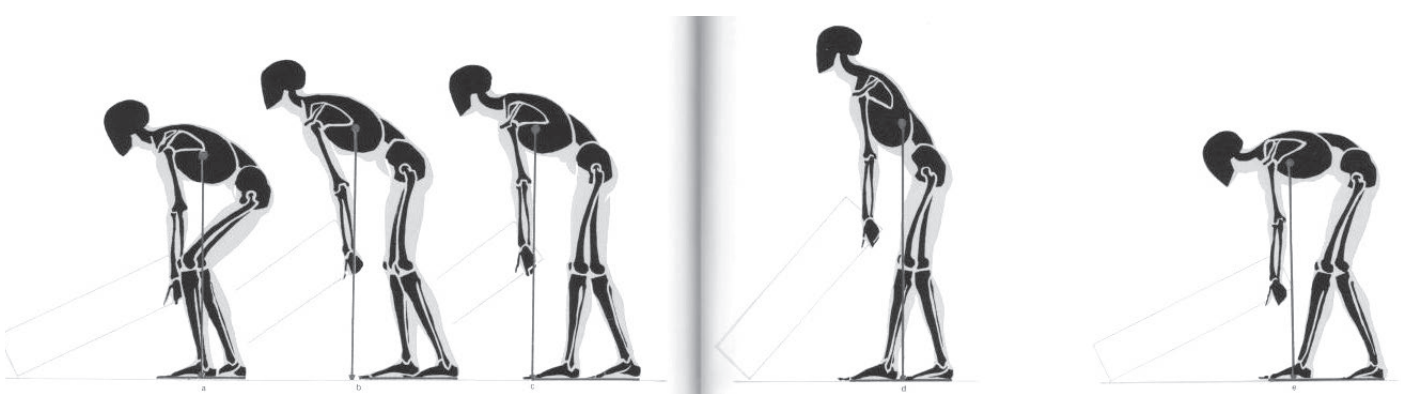
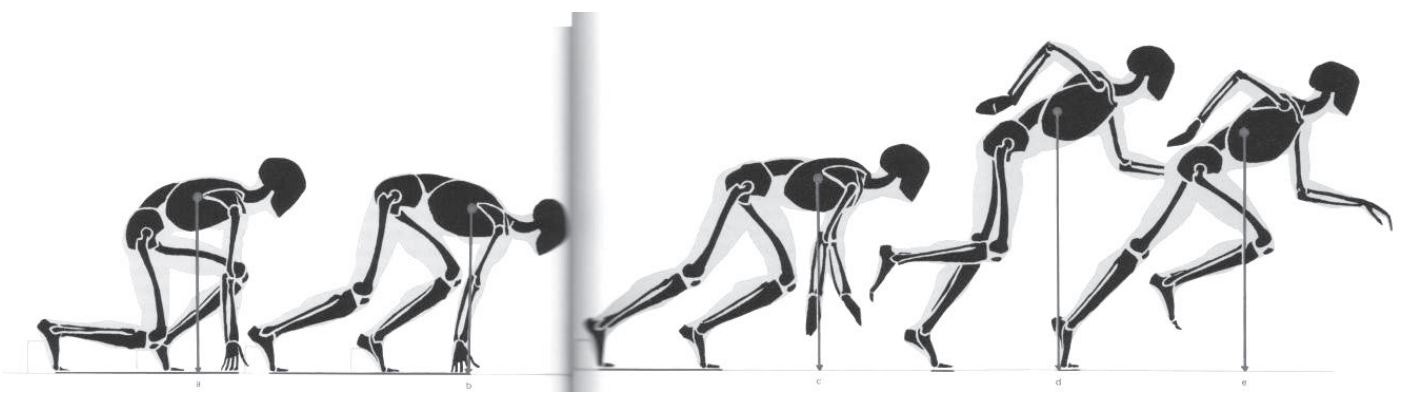
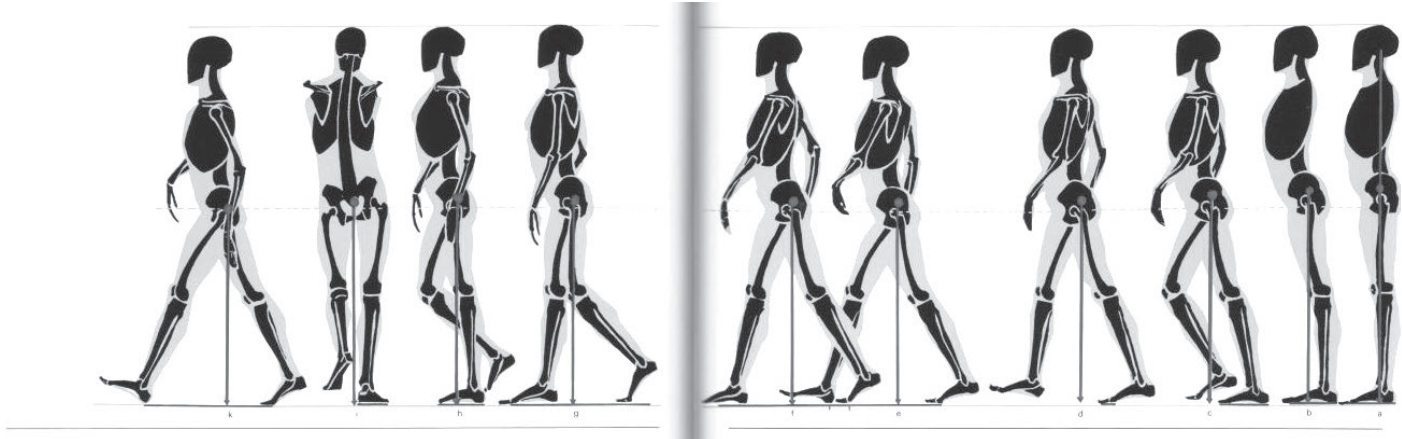
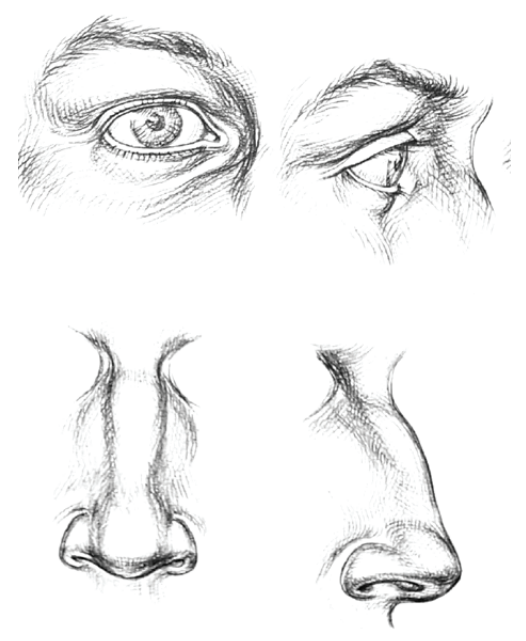
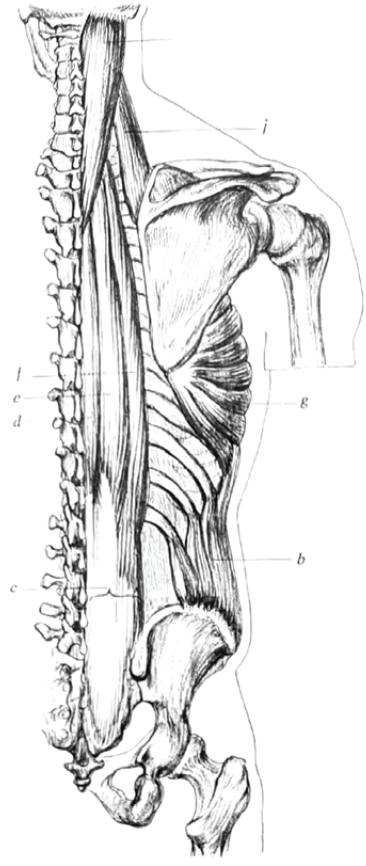
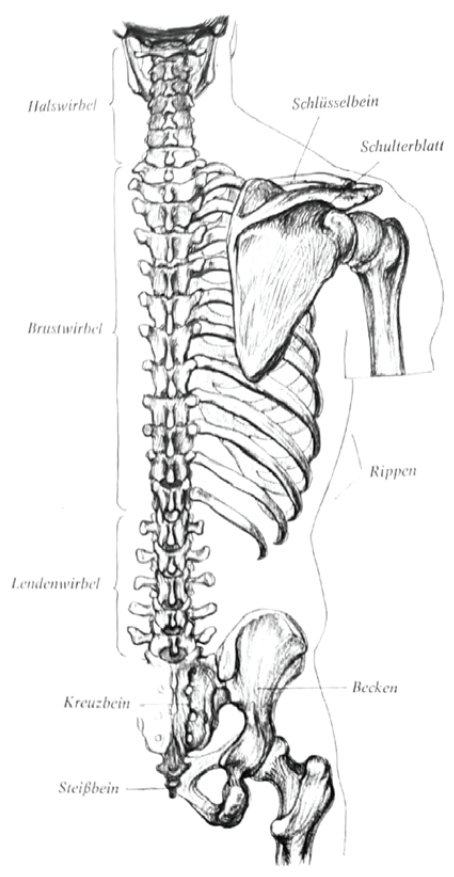
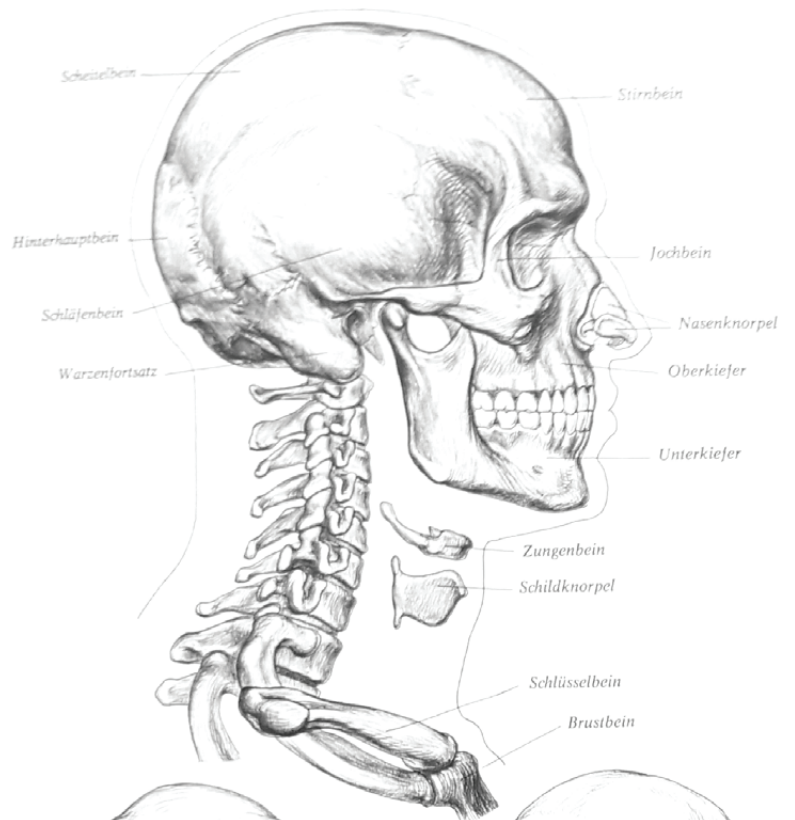
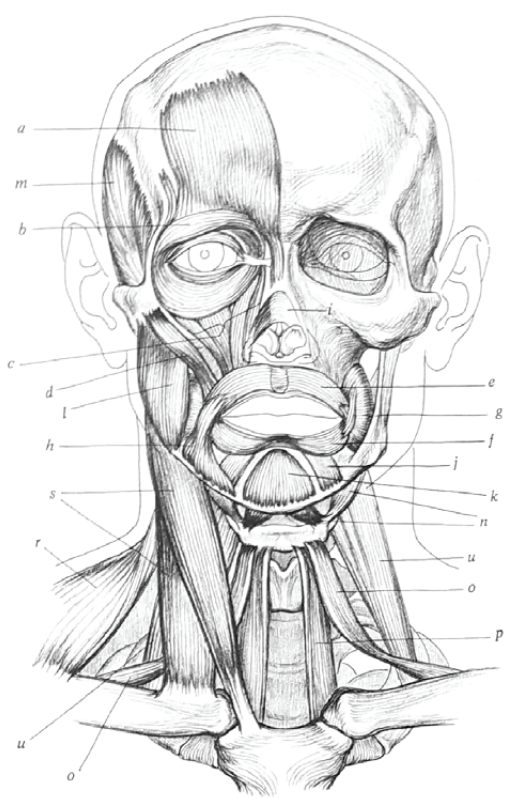


Illustrationen aus: Gottfried Bammes, Die Gestalt des Menschen

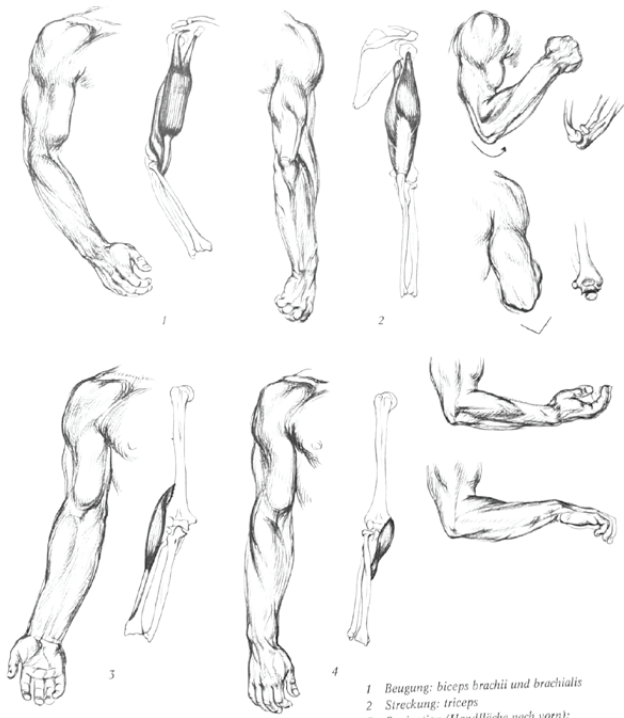




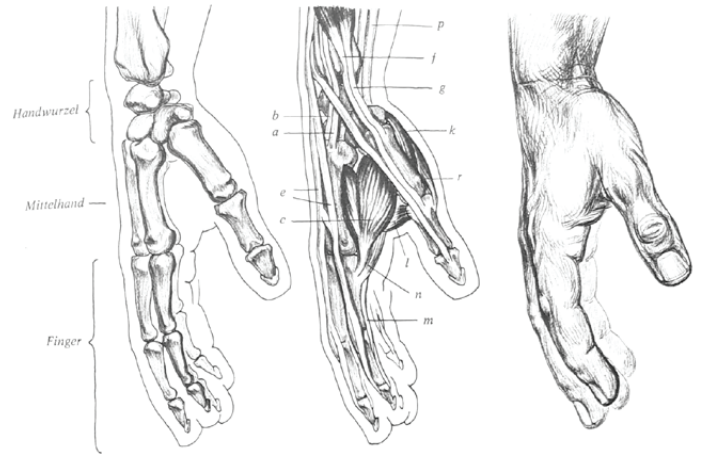
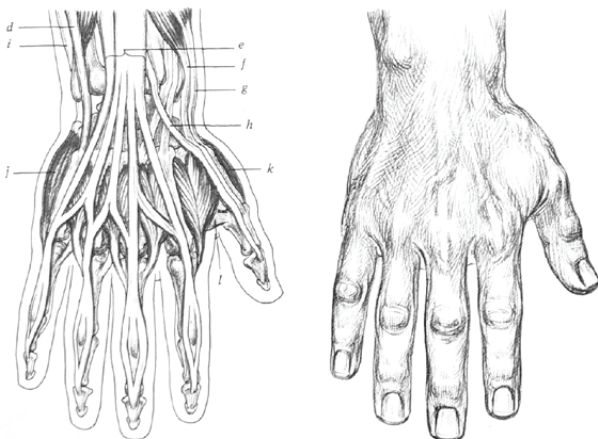
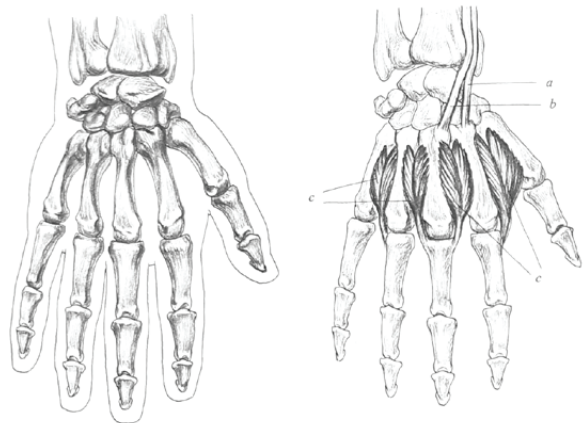
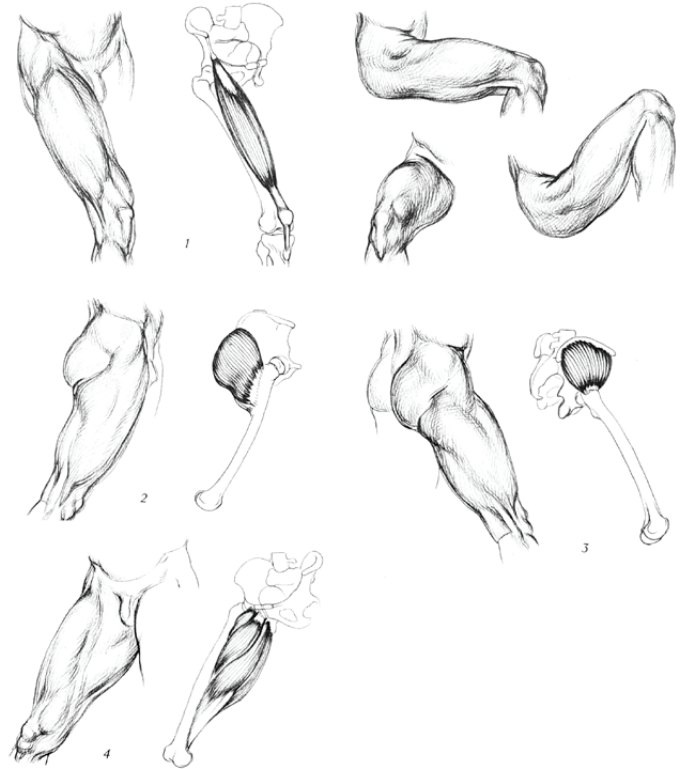
Illustrationen aus: Gottfried Bammes, Die Gestalt des Menschen



Illustrationen aus: David K. Rubins, Anatomie für Künstler



1 Beugung: biceps brachii und brachialis
 2 Streckung: triceps
 3 Supination (Handfläche nach vorn):
 4



a Sehne des extensor carpi radialis longus
 b Sehne des extensor carpi radialis brevis
 c interossei dorsales
 d extensor carpi ulnaris
 e Sehnen des extensor digitorum communis und des extensor digiti quinti proprius
 f extensor pollicis brevis
 g abductor pollicis longus
 h Sehne des extensor pollicis longus, eines tiefliegenden Muskels, der auf den Bildtafeln des Armes nicht erscheint
 i flexor carpi ulnaris
 j abductor digiti quinti
 k opponens pollicis
 l adductor pollicis
 m Sehnen des flexor digitorum sublimis
 n lumbricales
 p flexor carpi radialis
 r abductor pollicis brevis

